

# Friends of Waiwhetū Stream

## December Newsletter 2021

Image: flooding this winter

### Where are all the eels?

The last two fish surveys (February and November 2021) have seen a decline in the number of eels. FoWS is monitoring this situation. Photo: Bringing the fyke nets in 27/11/2021



### Some highlights from the year

- Two vagrant Cape Pondweed plants were spotted and removed.
- The stream bed sweep in April netted 36 bags of rubbish
- Macro invertebrate surveys show a gradual increase in stream health.
- There was a low number of eels in the fish surveys this year.
- Winners of the Hutt City Wellington Airport Regional Community Award



### Hutt City Wellington Airport Regional Community Award

Friends of Waiwhetu are regional winners of the Heritage and Environment category.

Henry Steele and Ros Wech from the committee attended the evening (8 July 2021) to receive the award. This award comes with \$1000 from the council and the committee has decided that this money will be earmarked for future bench seating along the stream.





## The latest on weeds

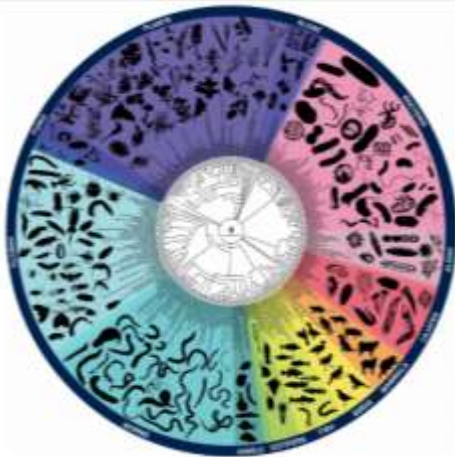
The new initiative, the **Weed Warriors**, began this year; it has been very successful with weeding undertaken every third Sunday of the month. Weed Warriors Coordinator, Ros, can be contacted on [rosw62@gmail.com](mailto:rosw62@gmail.com). Weeding implements are supplied and the piles of weeds are removed by Council contractors the following day.



GWRC asked independent contractor Chris Cosslett to carry out a weed mat trial over two years. This was done at the Hayward Terrace site. The photos on the left show the effects of one type of weed mat. FoWS were looking for an environmental and cost-friendly alternative to non-woven polypropylene matting which had been used since 2012. Performing almost as well was the Brown Eco Weed Mat supplied by Pillar Products. The GWRC is investigating the possibility of using this mat, because after two years, it does appear to break down, unlike the polypropylene which does not. (Photos: Chris Cosslett)

## eDNA of the stream

Amy Gault from Wilderlab was guest speaker at the AGM on 18 October 2021. From water samples collected by the FoWS, Wilderlab had run some tests and undertaken an analysis concerning what species can be found in the stream.



Not surprisingly the Mallard duck was the most common species.

You can go to the Wilderlab website and search the results – the code for the Waiwhetu Stream is 602017. The

chart here is for the Waiwhetu stream. Amy's presentation is also on the FoWS website.



## See something odd?

If you see anything odd in the stream report it to the Hutt City Council on their website. The Council will take action against polluters.



Koura, picked up (and released) in the October bug survey

### The 2021 Committee:

Chair: Michael Ellis

Deputy Chair: Rachel Tallon

Secretary: Grant Webby

Committee members: Rosemary Webby, Roy Ebney, Ros Wech, Vera Green-Bargiacchi, Henry Steele, With Riba Greally as HCC Liaison officer and Ross Jackson as GWRC representative.

Rubbish collection coordinator: Phillip Zhou  
<https://www.waiwhetu-stream.org.nz/>